

Brief introduction



New Hall 600m²

In the first half of the 1990s, **ABA** metal production mainly focused on the production of equipment for gastronomic industry in stainless steel varieties, production of transportation and container sets for the transport in operations with strict hygienic standards in health care and similar plants. Interest and needs by potential customers, particularly health care facilities and hospitals, gradually ceased to correspond with financial possibilities of health care industry, and therefore the company had to adapt the range of products in the area of metal production to different customer groups in order to preserve the existence of the company.

In 1999 the company won a tender organized by the Swedish company **NEDERMAN** for the manufacture of a line of filter units located in industrial plants. Our company produces such units on the basis of supplied production documentation within the contractual relation in cooperation with **NEDERMAN** Company.

To be able to satisfy the quantitative and qualitative requirements of foreign customers, during the years 2010 and 2011 we invested in new IT software system and we built a new production hall with an area of 600m², which is ready for production for a new potential customer.

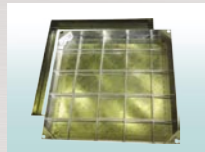
Step into the new century



After 2000 we have successfully developed cooperation with the Swedish partner and during the years the company employees in cooperation with **NEDERMAN** staff have contributed to certain improvements and innovations in the design of this equipment.



In 2006 we established cooperation in the production of medium and heavy weldments for the Danish company **SAMSON AGRO A/S**. In this production, weldments are produced on the basis of documentation delivered by the partner with significant proportion of welding operations, which evidences the ability of company employees to manufacture high-quality products meeting high demands of the Danish partner.



Another important step of the company was the commencement of production of certified metal frames in cooperation with another Swedish company **ELKINGTON**, which are used in industrial plants and exterior operations supplemented with corresponding filling and finish, such as covers of sewerage outlets and trapdoors to various shafts. The frames are produced pursuant to documentation supplied by the Swedish partner.

Provided services and technologies

ABA procures production of its range of goods in the whole spectrum of the production process starting with processing customer's requirements to technical preparation, material supplies for production, production proper including potential surface treatment, to assembly and dispatch. Surface treatment is carried out by painting in our paintshop and hot dip galvanizing is done in our neighbourhood; within the process of assembly the installed electric elements and aggregates are tested, including issuing of inspection reports and completion of user manuals. The company offers the below-mentioned production activities in case of demand or within the framework of cooperation.

In the area of preparation of semi-finished products the company uses machines, aggregates and cooperation for the division of material by cutting, for standard chipping machining, or as the case may be for shearing and bending in its plants.

In the area of welding the company has specialists both for work with standard steel material, and with stainless steel and aluminum-based material.



ABA Šumperk offer well experienced people in black, stainless and aluminium welding for complete or semi-finished steel production in a high quality. Due to our small working expenses we can also reach positive prices. Some samples of our production follow...



...professional press brakes and punching presses prepares steel parts...



...our welders complete them together mostly using fixtures to keep a high quality...



...then we stock the semi-finished products in order to react really fast to our customer requests...



...when needed, products are painted in our paintshop...



...with followed assembly with all kinds of accessories with the final electric test when needed...

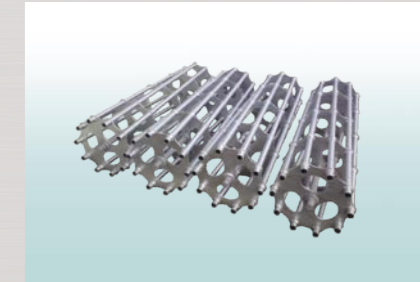
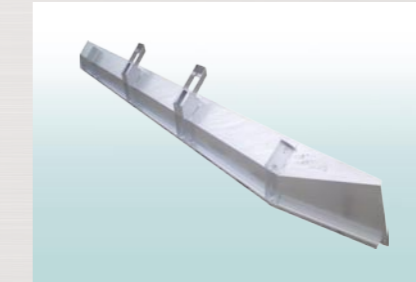


...and the last step is loading well packed goods to avoid damage.

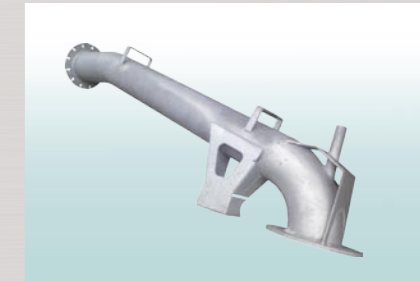
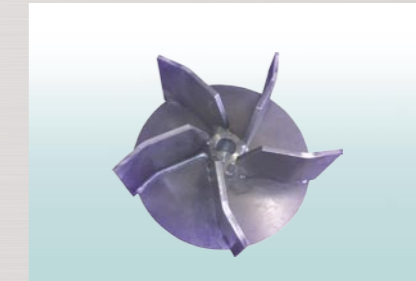
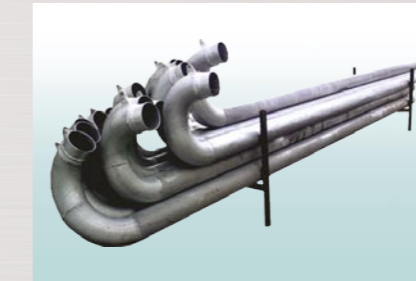
Reference massive weldments:



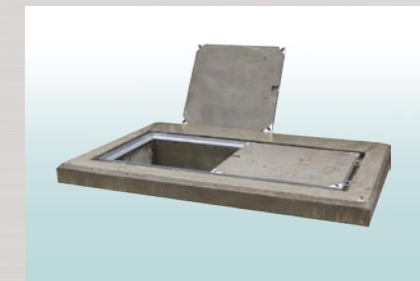
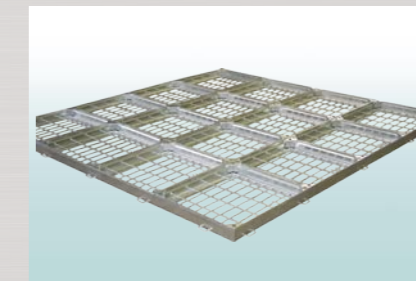
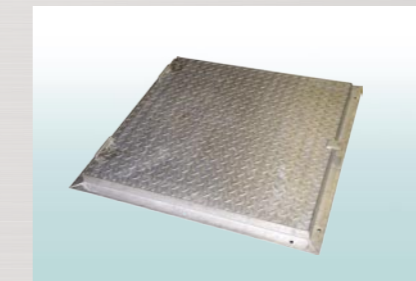
Reference medium weldments:



Reference lightweight weldments:



Covers and frames:



Specific loading of the massive weldments:

