

BEA 550 Kombi – The mobile combination

Exhaust-gas diagnosis on the go

BEA 550 Kombi

Developed in conjunction with inspection organizations specially for mobile use.



BEA 550 : The advantages at a glance

- Flexible in use – small, lightweight and transportable
- User friendly – PC, BEA 060, BEA 070, BEA 030 and KTS 5XX are connected wirelessly
- Simple – Works in conjunction with a standard PC (laptop, netbook)
- Specially designed for and in conjunction with inspection organizations
- Ideal for mobile exhaust emission analysis, particularly in inspection organizations
- Optional – Battery operation of the BEA 070

BEA 550 Kombi: System overview



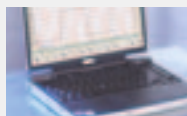
BEA 070



BEA 030
KTS 515¹



BEA 060



Laptop/
DCU 130²



Case for
accessories

¹optional

²not included in the equipment supplied

BEA 550 Kombi: Small and lightweight, perfect for variable test use

The transportable exhaust-gas testing system is ideal for all mobile testing applications. The mobile BEA 550 is specially tailored to meet the requirements of inspection organizations. With its wireless radio and battery technology as well as the practical sensors, which do not have to be removed for transportation purposes, it is always readily available for precise examination and setting of gasoline, gas and diesel vehicles. It offers an impressive combination of compact size, the low weight and transportability.

Equipped for a flexible applications

- ▶ BEA 060, 4/5 gas measuring module, Bluetooth (CO, CO², HC, O², optional: NO) with deposit area
- ▶ BEA 070, smoke-opacity testing module, Bluetooth, optional: battery and charger
- ▶ KTS 515, Bluetooth (optional)
- ▶ BEA 030, engine speed testing module, Bluetooth (B+/B-, TN/TD, Kl1/15, temperature)
- ▶ BEA PC software
- ▶ Vehicle exhaust emission analysis target database
- ▶ Case for accessories

Order number:

BEA 550 Kombi (including BEA 030 and KTS 515)	0 684 105 500
BEA 550 Kombi (including BEA 030 without KTS 5XX)	0 684 105 502

BEA 550 Otto – 4/5 gas analysis in mobile use



BEA 060

BEA 060: The mobile 4/5 gas measuring module for gasoline and gas vehicles

The measuring module for precise measurement of CO, CO₂, HC, O₂ and (optional) NO values in gasoline and gas vehicles.

Benefits to the workshop

- ▶ Standalone tester, PC controlled
- ▶ Flexible – PC control via Bluetooth or USB
- ▶ Practical – Deposit area for probe, hose, sensors
- ▶ Compact – All measuring accessories are integrated in the unit
- ▶ Maintenance friendly – Filter is easily accessible from the exterior
- ▶ Durable – Extremely rugged and reliable
- ▶ Rugged – Filter and connector with impact protection
- ▶ Easy to use – Compact size and low weight
- ▶ Measuring input for temperature sensor
- ▶ Optionally expandable to include NO measuring function
- ▶ Connectivity for BDM 300
- ▶ Power supply for BDM 300
- ▶ Transfer of measurement data from BDM 300 to BEA 060 and PC

Order number:

BEA 550 Otto (including BEA 030)

0 684 105 277

Technical data	BEA 060
Dimensions (W x H x D)	414 x 330 x 280 mm
Weight approx.	10 kg
Supply voltage Power supply unit	100 – 240 V, 50 – 60 Hz
Operating temperature range	5 °C to 45 °C

Designation	Measurement range	Resolution
CO	0 – 10 % vol.	0.001 % vol.
CO ₂	0 – 18 % vol.	0.010 % vol.
HC	0 – 9,999 ppm	1.0 ppm
O ₂	0 – 22 % vol.	0.010 % vol.
NO	0 – 5,000 ppm	1.0 ppm
Lambda	0.5 – 1.8	0.001
COvrai	0 – 10 %	0.010 %

BEA 550 Diesel – Smoke-opacity testing module in mobile use



Perfect for flexible, user-friendly testing:

- ▶ Wireless technology
- ▶ Optional battery operation
- ▶ Short warm-up times
- ▶ Sensors remain connected during transportation

BEA 070: The mobile smoke-opacity testing module for diesel vehicles

This new, portable unit is designed for efficient smoke-opacity testing on diesel vehicles. It is ideal for workshops and inspection organizations.

Benefits to the workshop

- ▶ Standalone tester, PC controlled
- ▶ Flexible – PC control via Bluetooth or USB
- ▶ PC control via Bluetooth or USB
- ▶ Practical – Deposit area for probe, hose, sensors
- ▶ Compact – All measuring accessories are integrated in the unit
- ▶ Maintenance friendly – Sensor and receiver can easily be cleaned from the exterior
- ▶ Durable – Extremely rugged and reliable
- ▶ Rugged – Filter and connector with impact protection
- ▶ Easy to use – Compact size and low weight
- ▶ Also suitable for use on buses and commercial vehicles
- ▶ Optional battery operation (lithium ion technology)¹
- ▶ Optional charger (mounted on the equipment trolley or wall)

¹ Operating time approx. 2 hours, charging time approx. 1.5 – 3 hours

Order number:

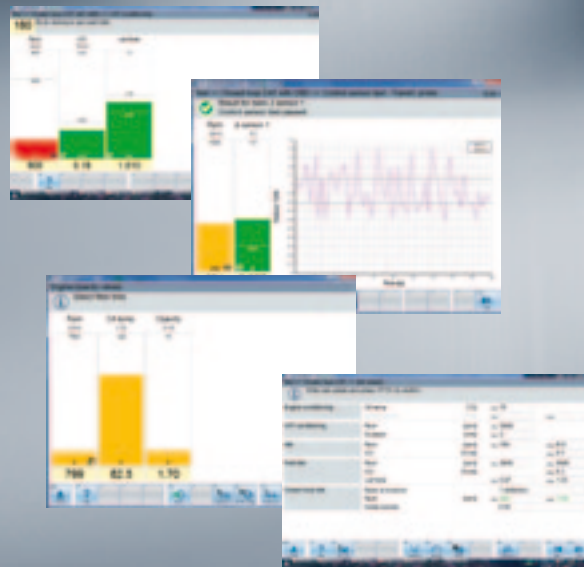
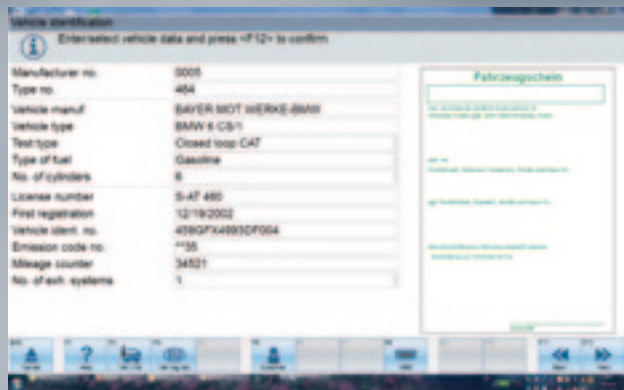
BEA 550 Diesel (including BEA 030)

0 684 105 177

Technical data	BEA 070
Dimensions (W x H x D)	414 x 330 x 280 mm
Weight approx.	10 kg
Supply voltage Power supply unit	100 – 240 V, 50 – 60 Hz
Operating temperature range	5 °C to 45 °C
Maximum temperature of exhaust-sample probe	250 °C
Maximum temperature at measuring input	200 °C

Sensor	Measurement range	Resolution
Sensor	Measurement range	Resolution
Degree of opacity	0 – 100 %	0.1 %
Coefficient of absorption	0 – 10 m ⁻¹	0.01 min ⁻¹

BEA PC software – Safely networked with AWN, BNet and AU Plus



BEA PC software: Identify the vehicle once only ...

... and use settings in all applications

BEA PC software: For high-speed data exchange

The new BEA PC software is the all-round solution for workshops. The possibility for data networking and easy operation with intuitive menu navigation and highly automated testing procedures will in future make possible even faster and more profitable statutory exhaust-gas testing.

Future-proof connectivity to other applications

The new test software by Bosch equips workshops for meeting new exhaust emission limits. By networking with AWN, BNet and AU Plus, Bosch workshops can take advantage of even more lucrative business opportunities.

AWN networked test equipment by Bosch



ASA Network links the entire test equipment to all other workshop areas. All information from order acceptance and the workshop through to central storage is available at all times – on any workstation. When a new job order is created in the system, the exhaust-gas analyzer receives the job data automatically.

Also networkable with BNet by Beissbarth

BEA is compatible with BNet, the network technology of Beissbarth GmbH



AU Plus: Efficient, harmonized and fully integrated

The connected exhaust-gas analyzer informs the network manager about the progress of work. After the test is completed, the results are immediately available to the job order system for further analysis. The data is finally transferred to the AU Plus software and stored in the database.

Benefits to the workshop

- ▶ Networking with AWN, BNet and AU Plus
- ▶ User friendly – Intuitive operation
- ▶ Fast – Highly automated testing procedures
- ▶ Simple – Automatic installation setup
- ▶ Future-proof – Adapts to regulatory changes
- ▶ Efficient – Linking of order acceptance and workshop
- ▶ Transparent – Vehicle and customer data at a glance

Minimum requirements for PC or notebook

- CPU at least 2 GHz or 1.6 GHz Dual Core
- Operating system Windows XP or WIN 7
- At least 2 GB of RAM
- At least 160 GB of hard drive memory
- 2 free USB ports

Adaptivity:

Software also runs on DCU 130 and KTS 670

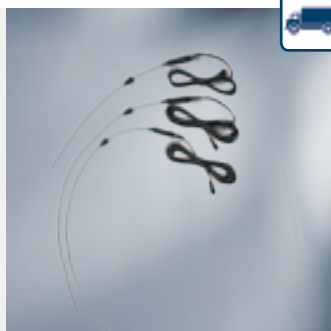
Scope of delivery



BEA 060 application

Scope of supply	Part No.	BEA 030	BEA 055	BEA 060	BEA 070	Premium trolley	Medium trolley	PC, monitor, keyboard, mouse	Printer	KTS 540	KTS 515	BDM 300	Remote control	BEA PC software and vehicle exhaust emission analysis target data
BEA 950 S1	0 684 120 350	●	●		●	●		●	●	●		●	●	●
BEA 950 S2	0 684 120 352	●	●		●	●		●	●			●	●	●
BEA 950 S3	0 684 120 300	●	●		●		●		●		●			●
BEA 950 S4	0 684 120 301	●	●		●		●		●					●
BEA 550 Kombi	0 684 105 500	●		●	●						●			●
BEA 550 Kombi	0 684 105 502	●		●	●									●
BEA 550 Otto	0 684 105 277	●		●										●
BEA 550 Diesel	0 684 105 177	●			●									●

Accessories for 4 / 5 gas analysis and temperature measurement



Measuring probes for temperature measurement¹



Infrared temperature sensor
Order number: 1 687 230 066



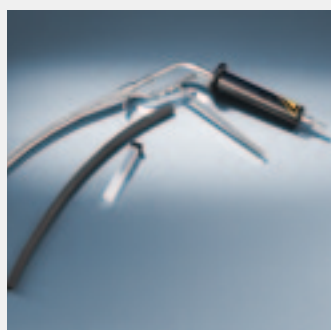
Retrofit set NO
Order number: 1 687 001 972



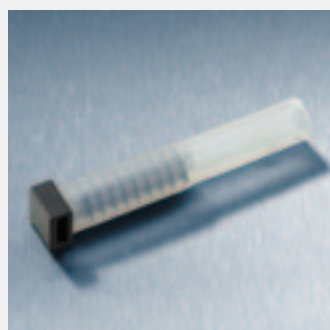
Silicone hose retrofit kit for 2-stroke engines
Order number: 1 687 001 283



Gas filter, activated carbon
Order number: 1 687 432 014



Exhaust gas probe for gasoline passenger cars (partial throttle up to 500 °C)
Order number: 1 680 790 052



Probe seal for leak testing
Order number: 1 684 485 280



Connection cable (2 m) for BEA 060 to cigarette lighter
Order Number: 1 684 465 584

Probes for temperature measurement

Probe	Cable length	Probe length	Remarks
1 687 230 036	300 cm	90 cm	Passenger cars
1 687 230 042	600 cm	90 cm	Passenger cars
1 687 230 045	600 cm	150 cm	Commercial vehicles
1 687 230 051	1,000 cm	150 cm	Commercial vehicles, buses
1 687 230 050	600 cm	210 cm	Commercial vehicles, buses

Accessories

for smoke-opacity testing



Passenger car full throttle exhaust gas probe for BEA 070
(measurements on engine power)
Order number: 1 680 790 046



Comm. veh. extraction probe for BEA 070
Order number: 1 680 790 041



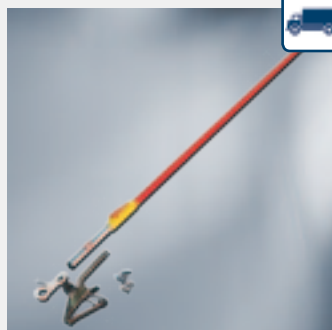
Extraction hose (BEA 070) for comm. veh. extraction probe (1m)
Order number: 1 680 712 195



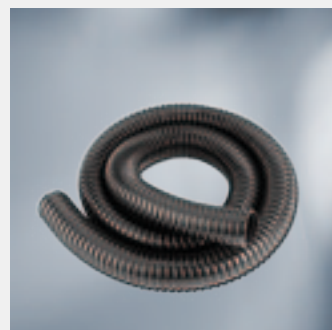
Extraction hose (BEA 070) for truck extraction probe (3.5m)
Order number: 1 680 712 201



Heated extraction hose (BEA 070) for truck probe (5m)
Order number: 1 685 510 232



Clamping fixture with telescopic rod for BEA 070 (for trucks with high exhaust)
Order number: 1 688 040 258



Spiral hose (1,5 m) for connecting the BEA 070 to the exhaust gas extraction system
Order number: 1 680 707 118



Battery retrofit kit for BEA 070
Order number: 1 687 001 626



Charger for BEA 070 battery
Order number: 1 687 023 619



Diesel upgrade kit for BEA 550 Otto to BEA 550 Kombi
Order number: 1 687 001 976

Accessories for professional emission analysis and OBD



KTS 515 – OBD module
Order number: 0 684 400 515



KTS 540 – ECU diagnostics with 1-channel multimeter
Order number: 0 684 400 540



KTS 570 – ECU diagnostics with 2-channel multimeter/2-channel oscilloscope
Order number: 0 684 400 570



OBD adapter box with OBD connector
Order number: 1 684 462 514



OBD diagnostic cable, 5m
Order number: 1 684 465 567



Wall mount for BEA 060 or BEA 070
Order number: 1 687 001 973



DCU 130
Order number: 0 684 400 130



Charger for DCU 130
Order number: 1 687 023 591



Remote control
Order number: 1 687 201 985



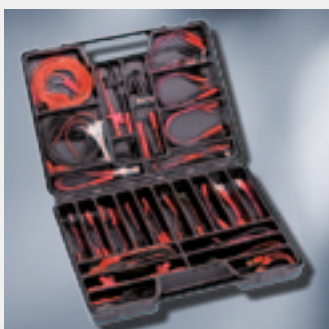
BDM 300
Order number: 1 687 023 489



Connecting cable to BDM 300 and to BEA 030
Order number: 1 684 463 810



Trolley for BEA 550
Order number: 1 688 003 255



Probe kit
Order number: 1 687 011 208